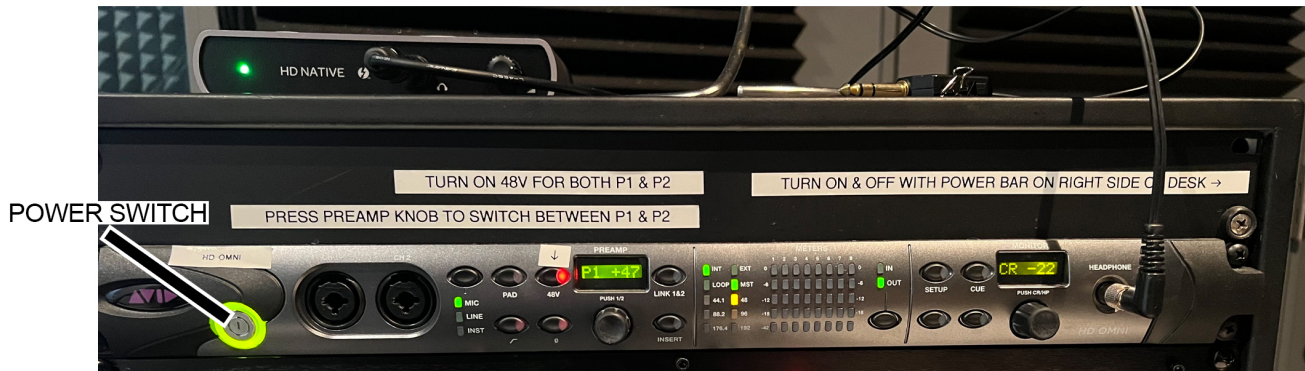


## Understanding LIFT's Pro Tools Interface & Setup

The LIFT Pro Tools Suite currently runs Pro Tools 2018.7.0 which cannot be updated any further at this time. The room has an AVID HD OMNI w/ HD Native Thunderbolt setup for connecting the microphones and speakers with the iMac for use with Pro Tools and other audio editing software.

As Pro Tools can be such an intimidating and confusing software to use, I have outlined the various setup and settings to be aware of with our specific layout.



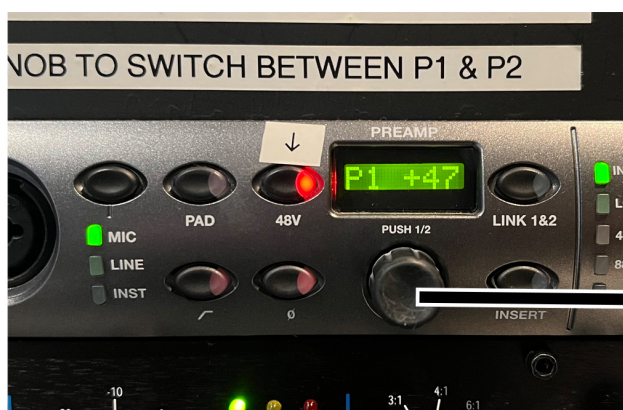
The HD OMNI Device is powered up by turning on the power bar beside the cabinet on the edge of the desk. Sometimes the OMNI may have been powered off itself, in which case you can press the large power button to turn it back on.

The OMNI has two microphone inputs which we use to connect the BOOTH MIC (microphone in the recording room) and the TALKBACK MIC (black microphone on the desk for communicating with person in the recording room). Both of these microphones need to have power supplied to them through the OMNI when starting up.

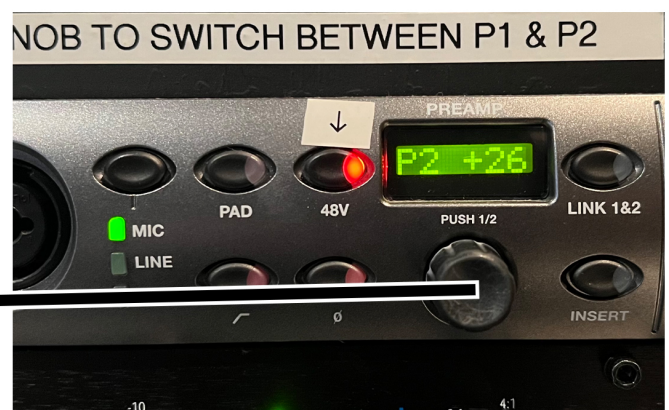
### Powering On the Microphones

To power both microphones, press the 48V button on the OMNI beside the small screen. This must be done twice to power both microphones. Below the small screen is a knob labelled PUSH 1/2 which allows you to toggle between the two microphone inputs.

- When the Screen says P1 you are on the input for the BOOTH MIC (Press the 48V button, which turns on a RED LIGHT to power the BOOTH MIC)
- Press the Knob in and the screen will say P2 which is the input for the TALKBACK MIC (Again press the 48V button, which turns on a RED LIGHT to power the TALKBACK MIC)



P1 (BOOTH MIC) with 48V power on



P2 (TALKBACK MIC) with 48V power on

The TALKBACK MIC needs to be activated by pressing the base every time that you want to speak into it and be heard. When powered with 48V and pressing on the base, a blue light will show on the base.

Turning the “PUSH 1/2” Knob will also adjust the input gain of these two Microphones. Again, click it to toggle between adjusting either the BOOTH MIC or the TALKBACK MIC



Press the TALKBACK MIC base to use it

Be sure not to press the “PAD” button as this will drop the input signal of the microphone to a very very low volume



Typically you will leave the PAD button OFF (no light)

## Headphones and Speakers

The other main control to worry about on the OMNI is on the far right side where the headphones plug into the unit. This allows you to control the HEADPHONE volume and the SPEAKER volume for playback in Pro Tools.

Below the small display here is a knob labelled “PUSH CR/HP” which allows you to toggle between volume control for SPEAKERS or HEADPHONES.

- When the display says CR this is the SPEAKER output volume which you can adjust via the knob
- If you press the knob in then you can adjust the HP volume which is the volume for HEADPHONES

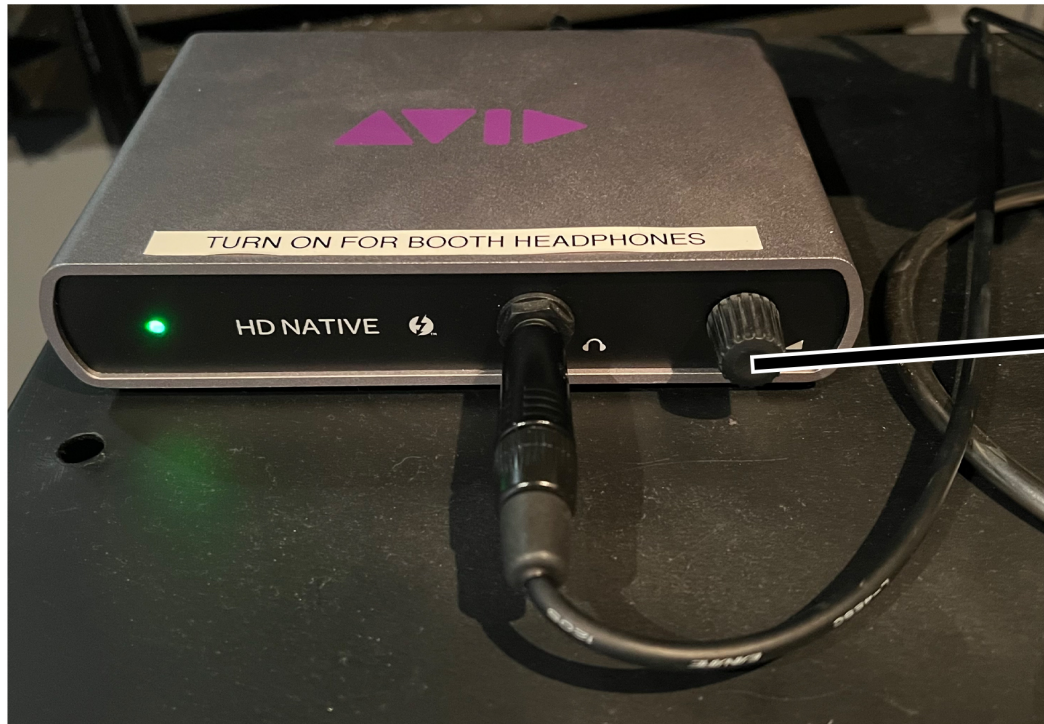
If you press the MUTE button to the left of the knob, then this will mute only playback through the SPEAKERS while still allowing you to hear playback through the HEADPHONES





## Booth Headphones

On top of the OMNI is the HD NATIVE box which controls the BOOTH HEADPHONES so that the person in the recording room can hear both themselves in the BOOTH MIC and the person at the desk speaking to them through the TALKBACK MIC. Press the knob on the box to turn it on and a green light will show on the box. You can then adjust the knob to adjust the volume for the BOOTH HEADPHONES



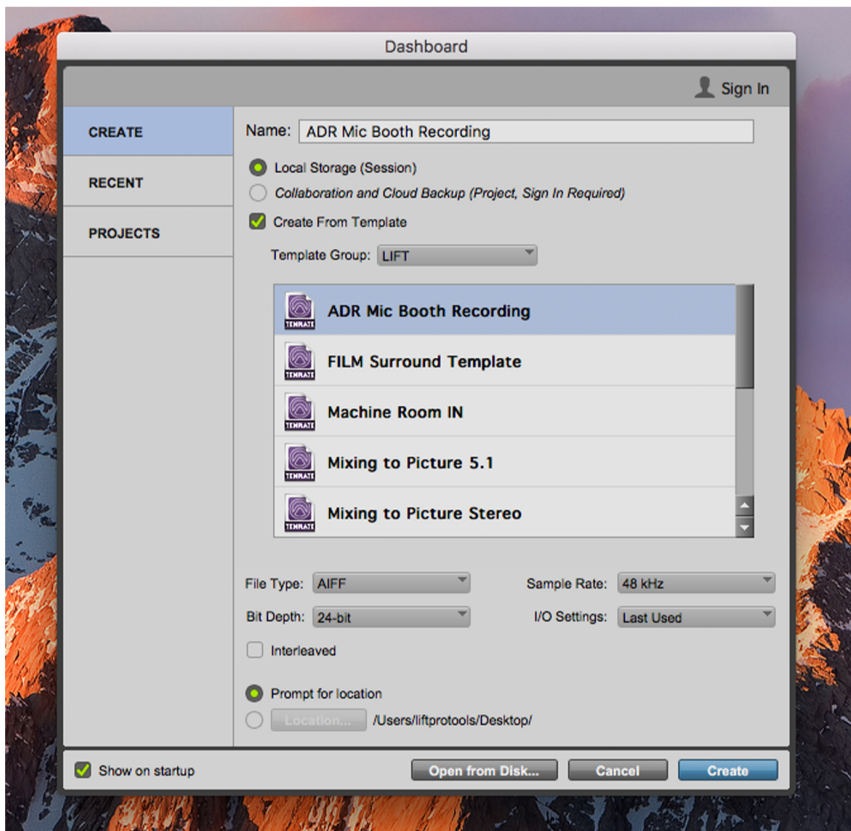
Power / Volume Knob

## Mixing Board

The mixing board in front of the iMac can be used with Pro Tools. Turn the board ON before turning on the iMac. Before loading Pro Tools the display at the top of the board should be filled with several empty rectangles. When loading a Pro Tools project with tracks, the board should then display the names of the tracks and allow you to control them with the sliders.



Power Button



Pro Tool Template Screen

## Pro Tools

When turning on Pro Tools you will have the option to select a few templates at startup. The two main templates you will likely use are:

- ADR Mic Booth Recording (A basic template which loads up the MIC BOOTH input and the TALKBACK MIC input automatically)
- Film Surround Template (A template which will load the 5.1 speaker setup automatically)

In the ADR Mic Booth Recording template you will have two tracks:

- BOOTH MIC - this is your track for the BOOTH MIC which is input A1 in Pro Tools
- TALKBACK MIC - this is an Aux track setup for input A2 which is the TALKBACK MIC

Having the TALKBACK MIC on an Aux track in Pro Tools allows for it to always be active (when pressing down on the base) instead of it having to be toggled on and off with the record button for the track

To record from the BOOTH MIC, be sure that your record button for the track is on

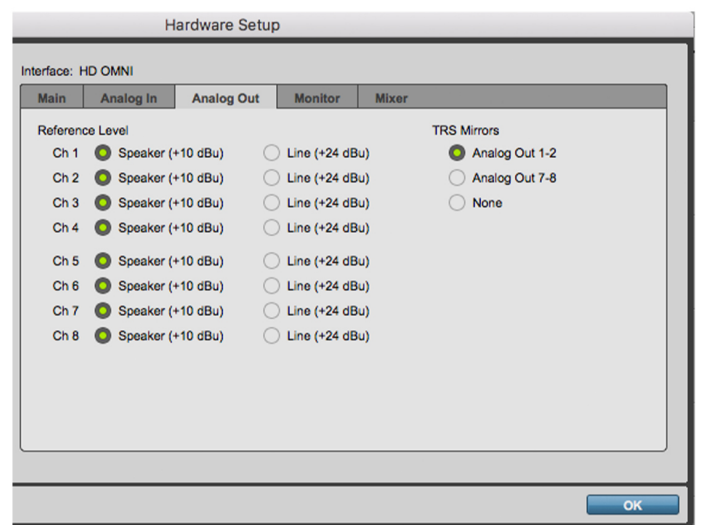
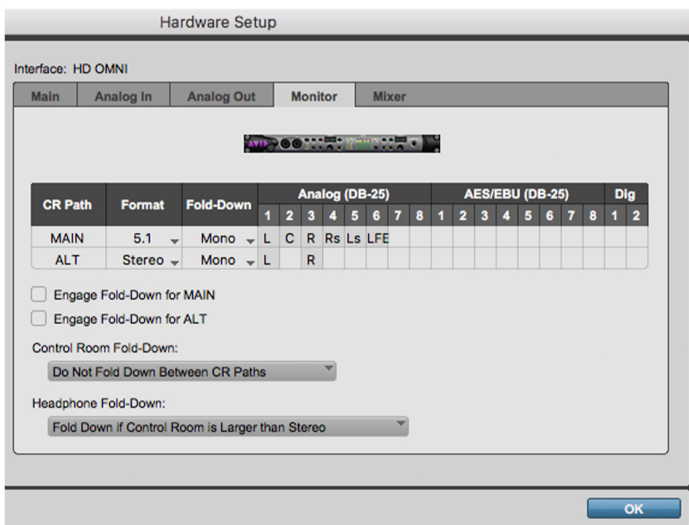
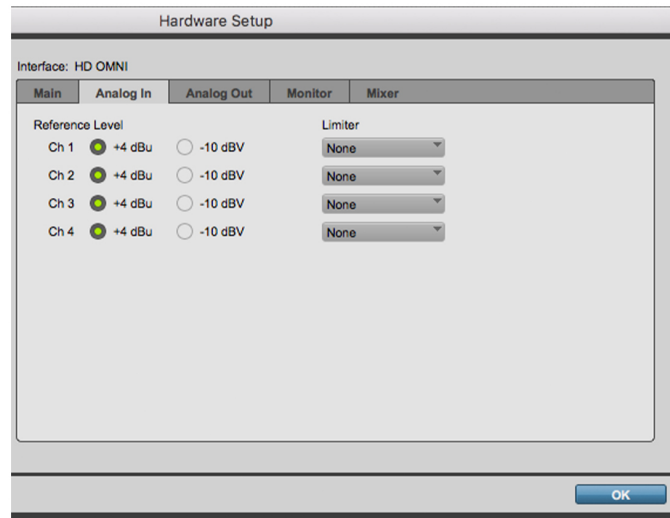
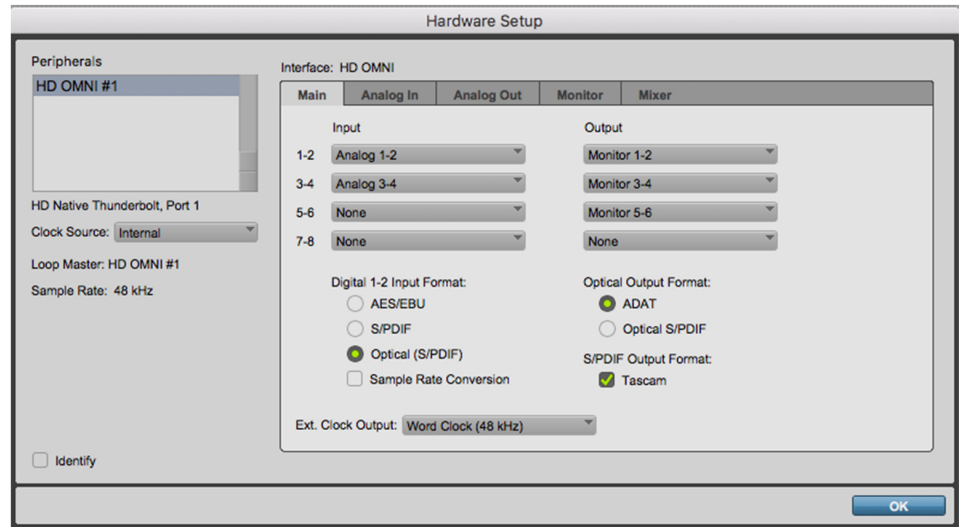
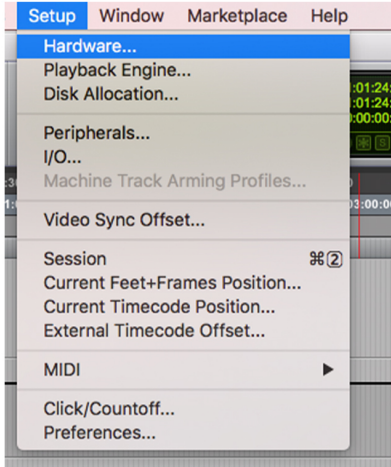


ADR Recording template with Booth Mic on A1 and Talkback Mic on A2



# TROUBLESHOOTING

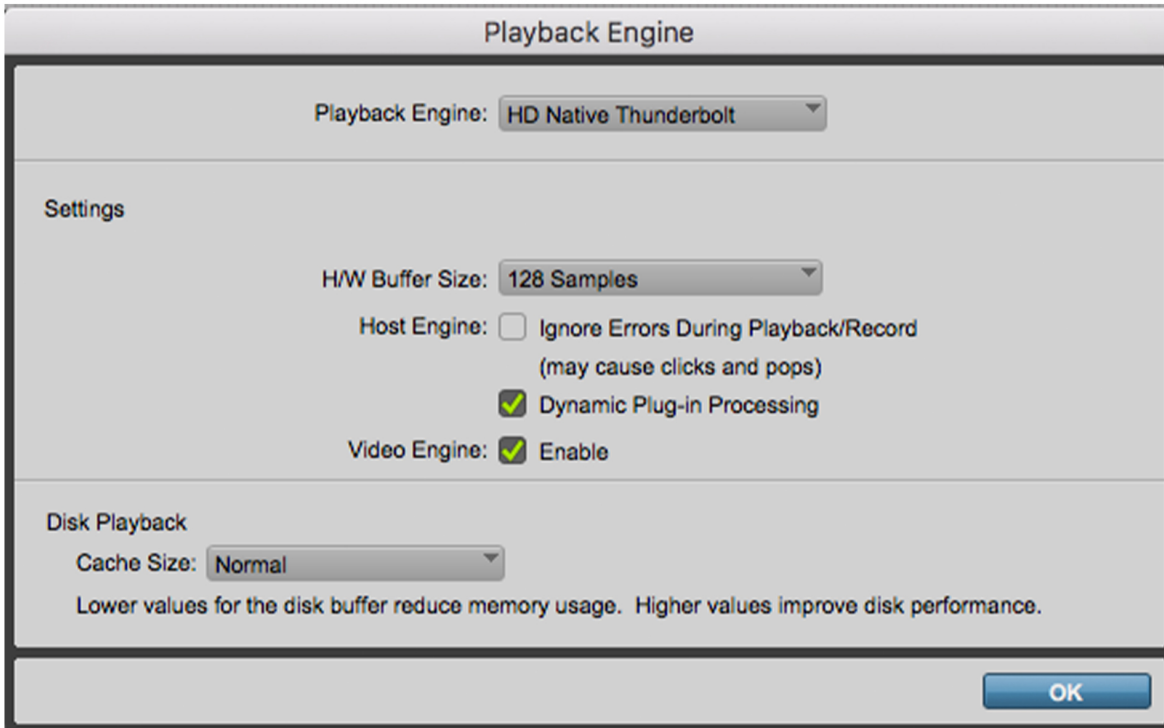
If for some reason the device is not working, I have included photos of how the settings in the Hardware, Playback Engine, Peripherals, and I/O menus should look. You can view these under the SETUP tab at the top of Pro Tools.



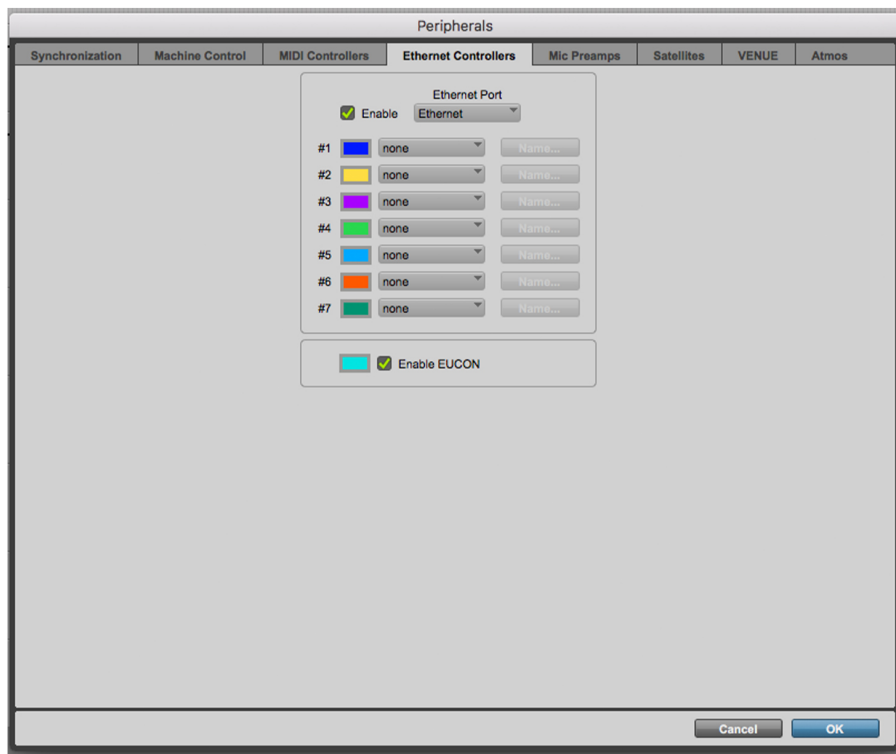
## TROUBLESHOOTING

If the HD NATIVE is not working or ProTools cannot find the playback engine, be sure that everything is powered on and the settings in the Playback Engine look like this:

Alternatively if Pro Tools Will not load, launch the program and hold down N on the keyboard and be sure that the playback engine is set correctly.



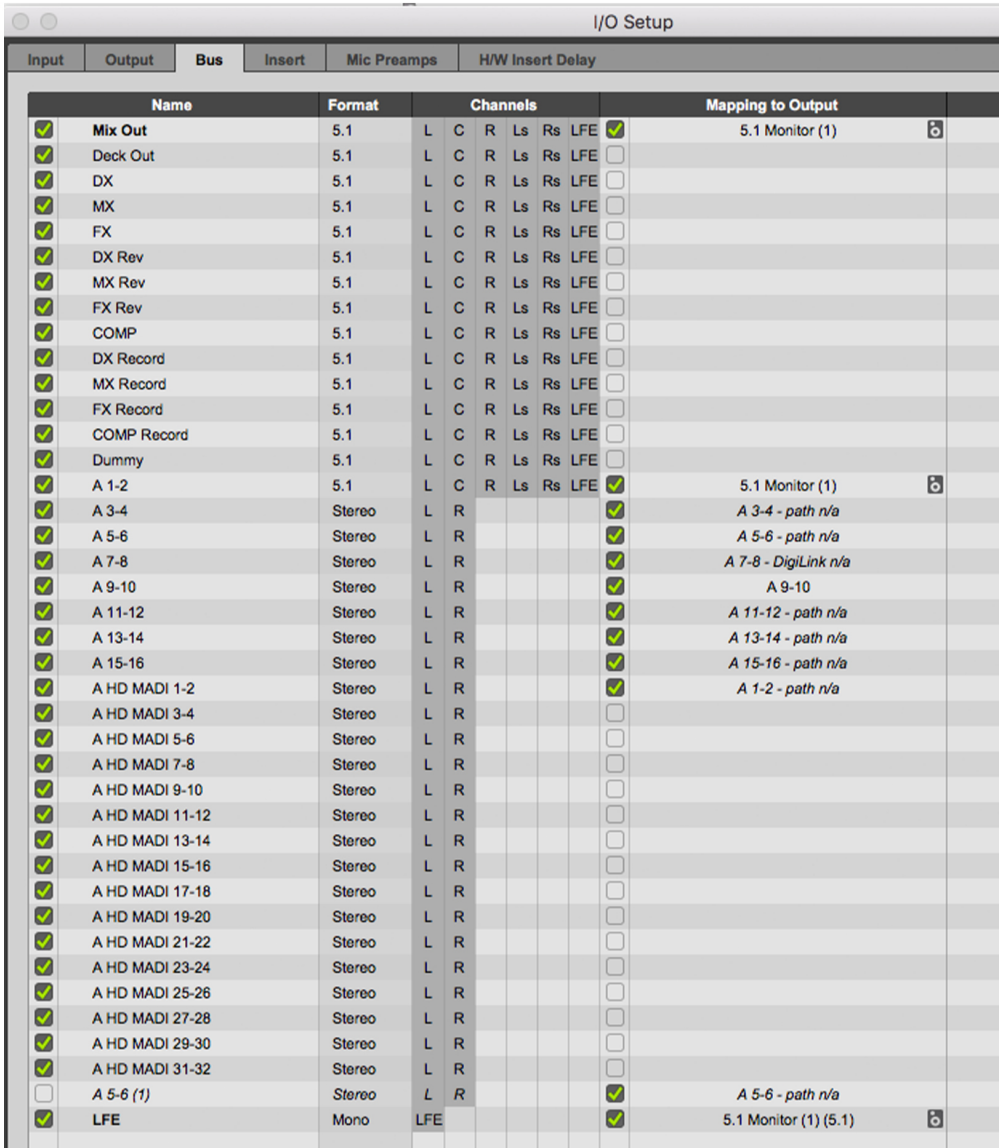
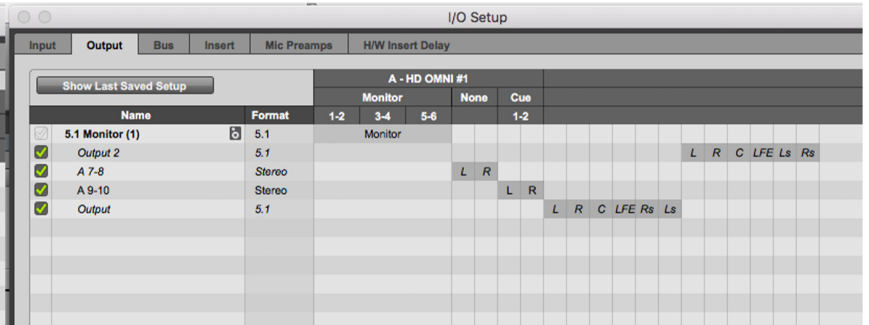
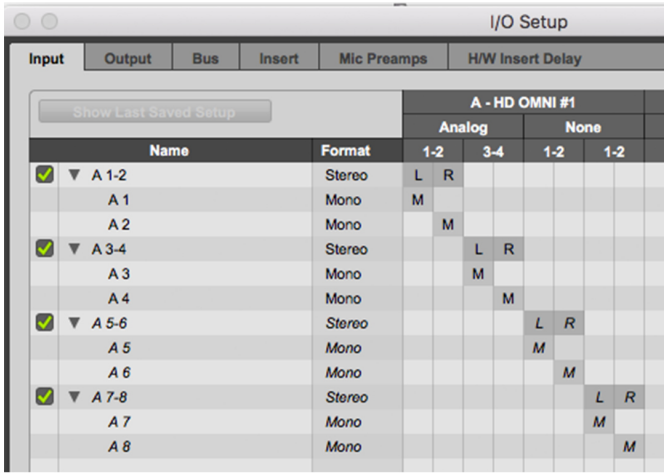
If the mixing board on the desk is not working, make sure that the settings look like this in the Peripherals Menu:





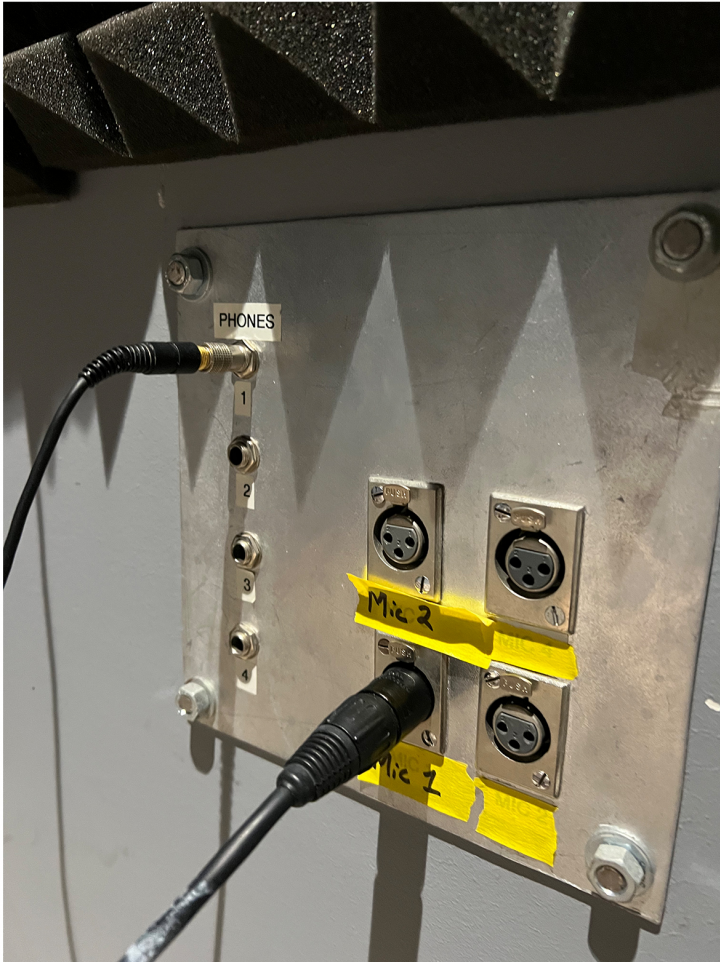
# TROUBLESHOOTING

Here also are screenshots of the Hardware Setup and I/O menus. In the I/O menu at the bottom you can select to "Import Settings" If something with the I/O is not working, you can try Importing the "5.1 LIFT.pio" file:



## TROUBLESHOOTING

For using the booth, make sure that the BOOTH MIC is connected to Mic 1 in the room and on the other side of the wall, the unlabelled XLR is connected to Mic 1. Do the same for the BOOTH HEADPHONES by connecting them in the booth to 1 and making sure on the other side of the wall the headphone cable is also connected to 1.



If the speakers do not have a green light on them, you can turn them on by pressing the power button on the back of each speaker.

